

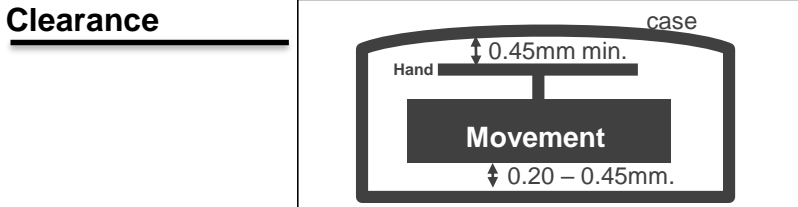
| | |
|--------------------------------|-----------------|
| Size <ligne> | 10 ½” |
| Height <mm> | 5.10(FS00 4.13) |
| Accuracy <per Month> | ±20 sec |
| Battery Life | 2 years |

*60 minutes chronograph operation per day

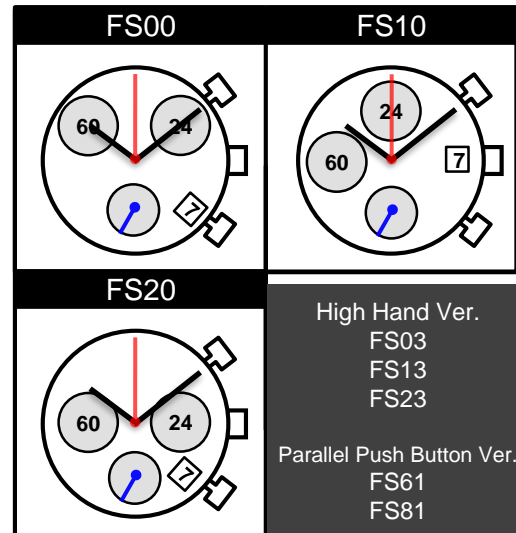
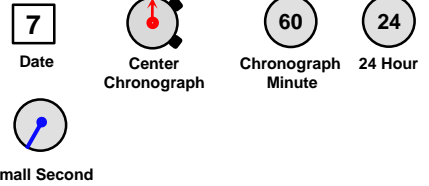
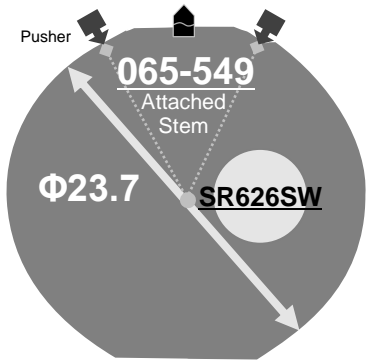
Battery consumption could be minimum by pulling out the stem

| | |
|---------------------------------|--|
| Balance Weight <µN.m> | Minute 0.40 Second 0.08 Small 0.02 |
|---------------------------------|--|

Featured by Shock Detection



| | |
|-------------------------|--------|
| Original Package | 500pcs |
|-------------------------|--------|



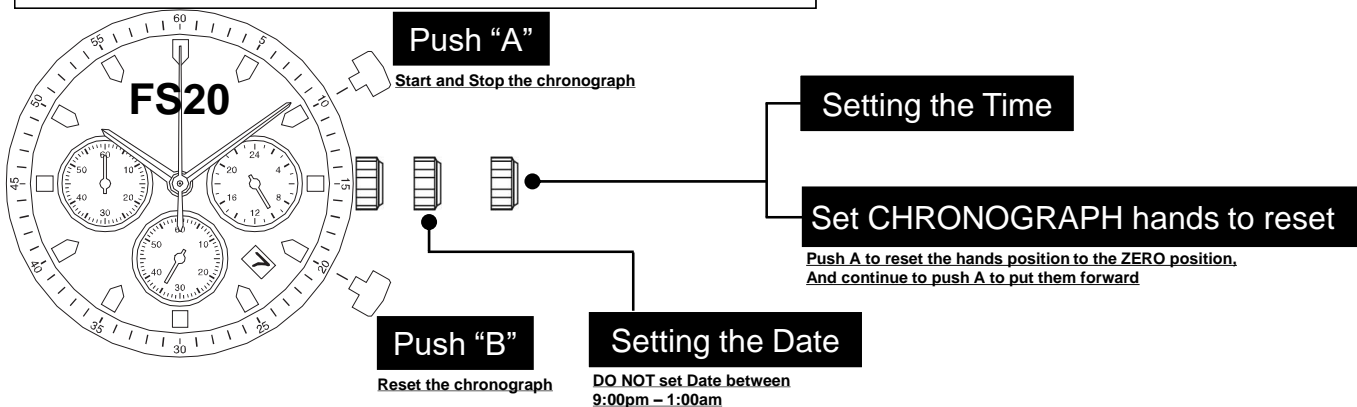
High Hand Ver.
FS03
FS13
FS23

Parallel Push Button Ver.
FS61
FS81

Time measurement

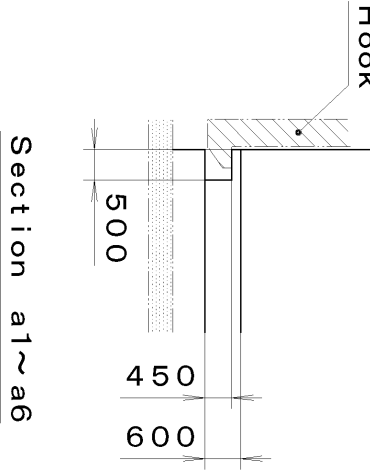
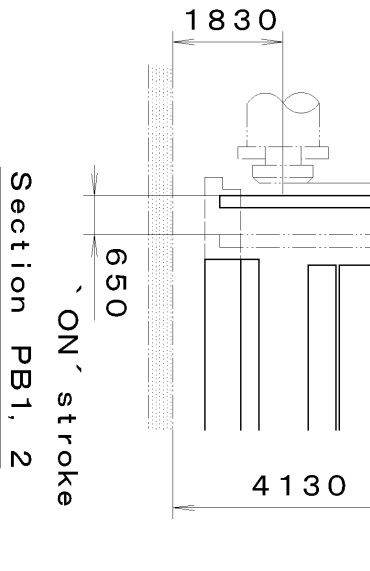
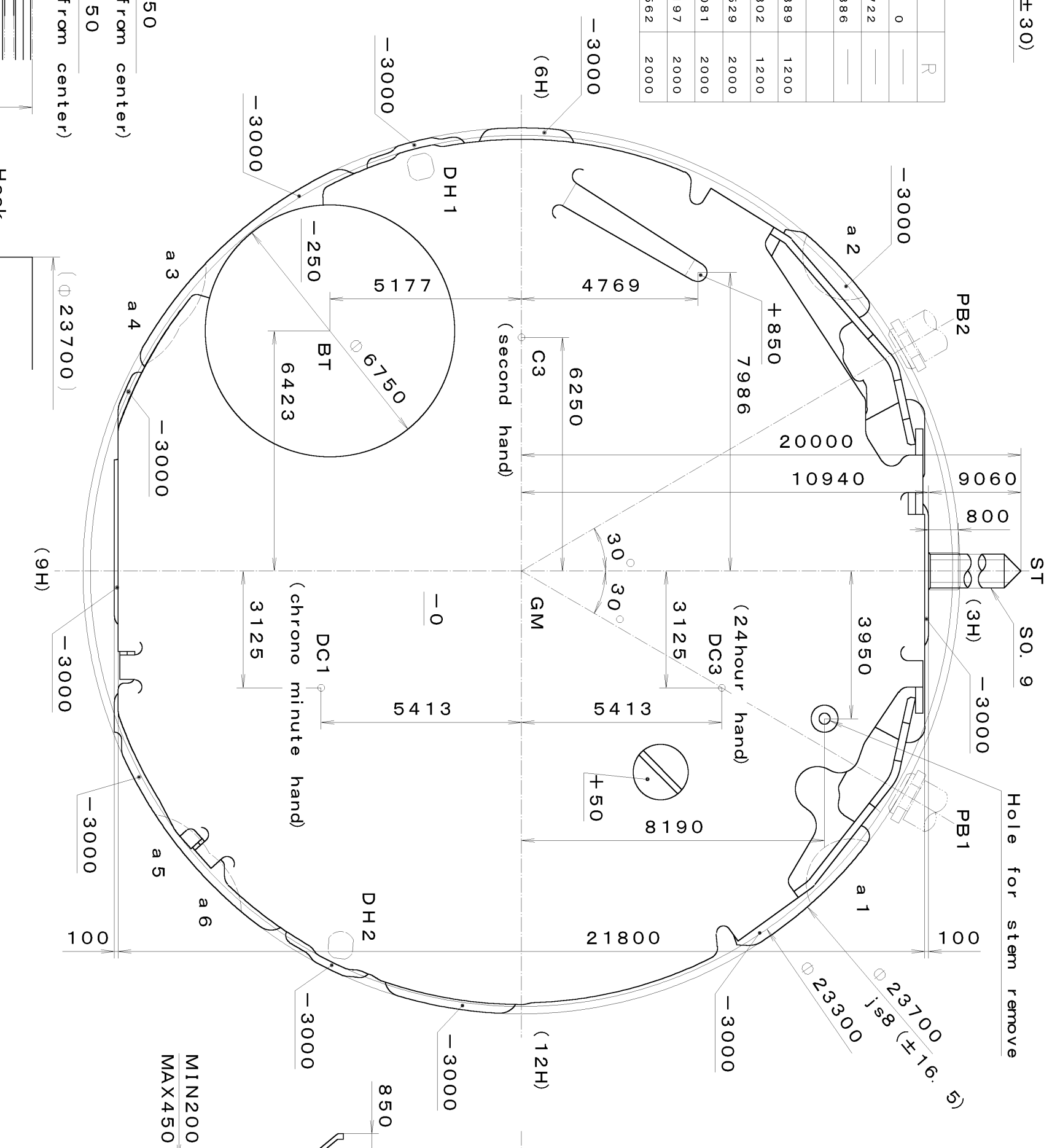
Accuracy

The unit (gate) time of measurement must be set at "10 sec." and the measurement must be performed in the form of complete watch.



DH1~DH2=20947 (±30)

| Coordinates | | | |
|-------------|--------|--------|------|
| Mark | X | Y | R |
| GM | 0 | 0 | — |
| DH1 | -10813 | -27222 | — |
| DH2 | 10022 | -4886 | — |
| a1 | 8364 | 8889 | 1200 |
| a2 | -8455 | 8802 | 1200 |
| a3 | -8078 | -10529 | 2000 |
| a4 | -7303 | -11081 | 2000 |
| a5 | 8494 | -10197 | 2000 |
| a6 | 9203 | -9562 | 2000 |



| Material | Quantity | Unit | Scale | Date | Drawn | Checked | Approved |
|----------------|----------|------|-------|------|-------|---------|----------|
| Material | Quantity | Unit | Scale | Date | Drawn | Checked | Approved |
| Heat Treatment | | | | | | | |
| Hardness | | | | | | | |
| Plating | | | | | | | |

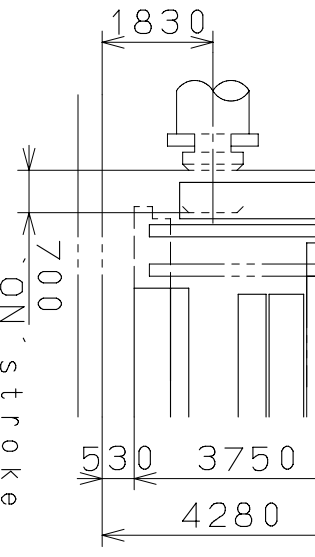
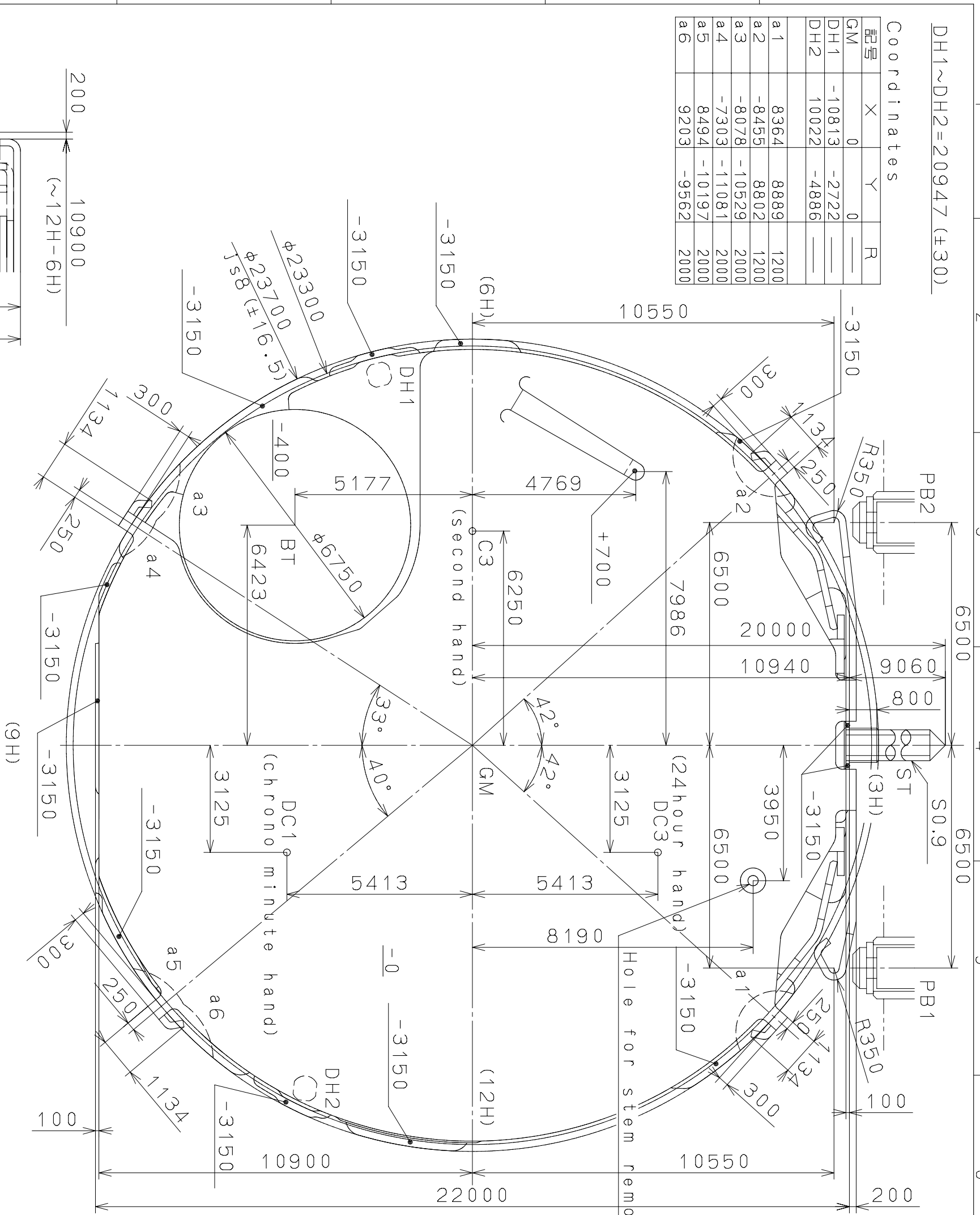
| General Tolerances | Dimensions | Angles |
|--------------------|------------|--------|
| General Tolerances | Dimensions | Angles |

| | |
|-----------------------|-------------------------|
| Cal. No. : FS00 | Parts : |
| Name : Frame for Case | Drawing No. : FS00C0000 |

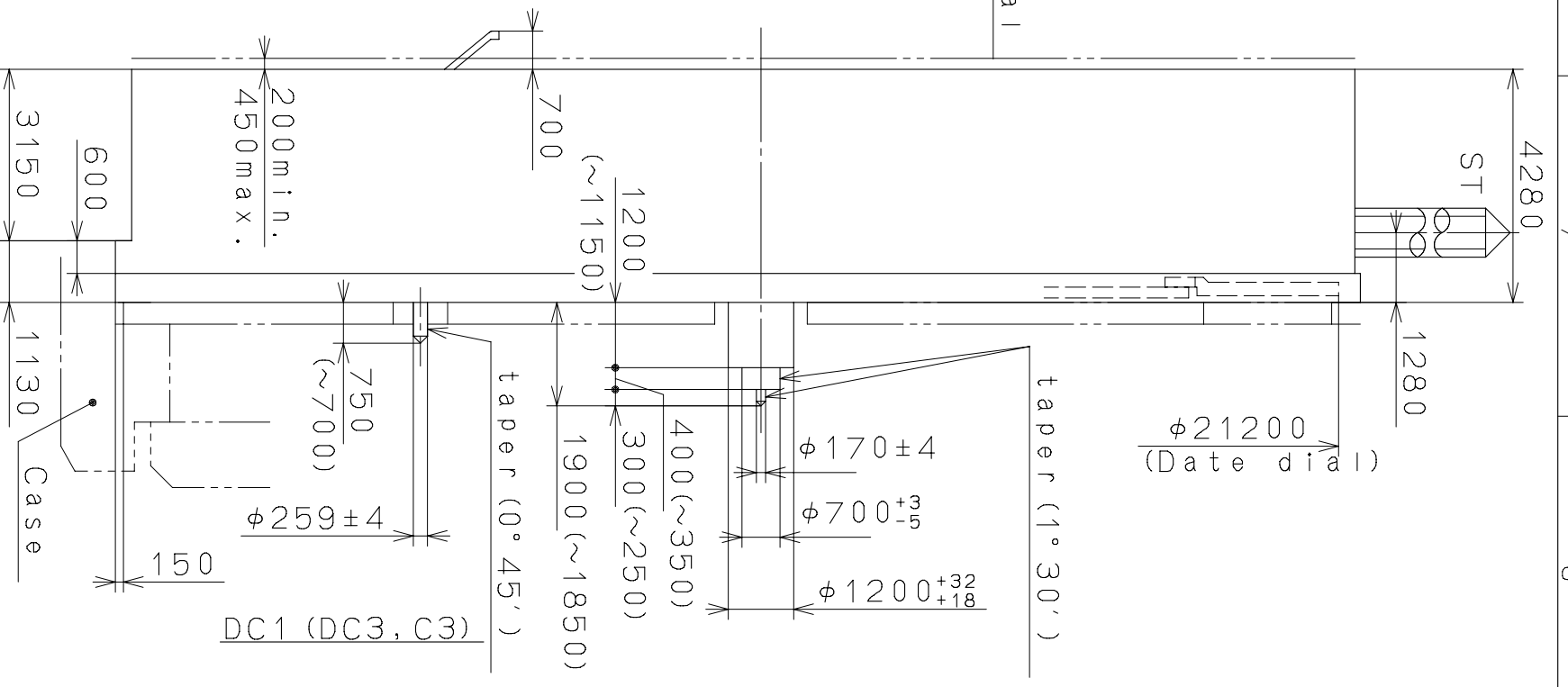
MIYOTA

DH1~DH2=20947 (±30)

| Coordinates | | | |
|-------------|--------|--------|------|
| 記号 | X | Y | R |
| GM | 0 | 0 | |
| DH1 | -10813 | -2722 | |
| DH2 | 10022 | -4886 | |
| a1 | 8364 | 8889 | 1200 |
| a2 | -8455 | 8802 | 1200 |
| a3 | -8078 | -10529 | 2000 |
| a4 | -7303 | -11081 | 2000 |
| a5 | 8494 | -10197 | 2000 |
| a6 | 9203 | -9562 | 2000 |

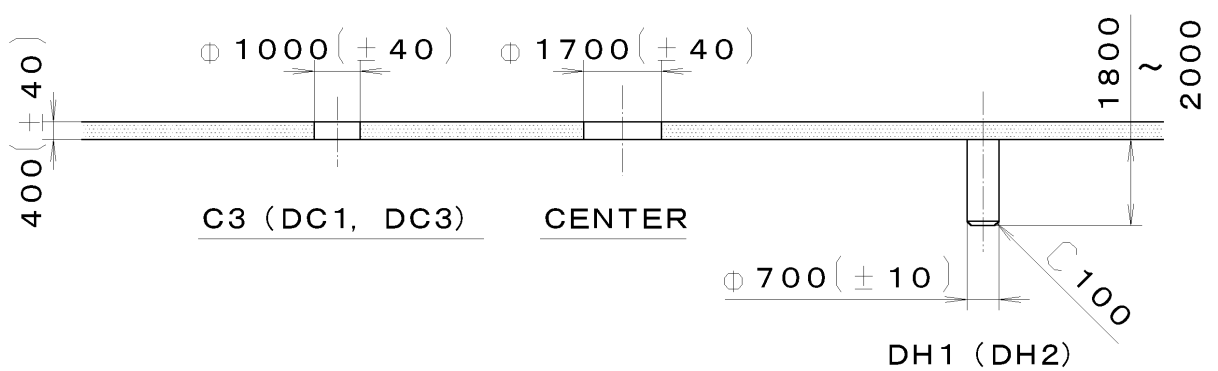
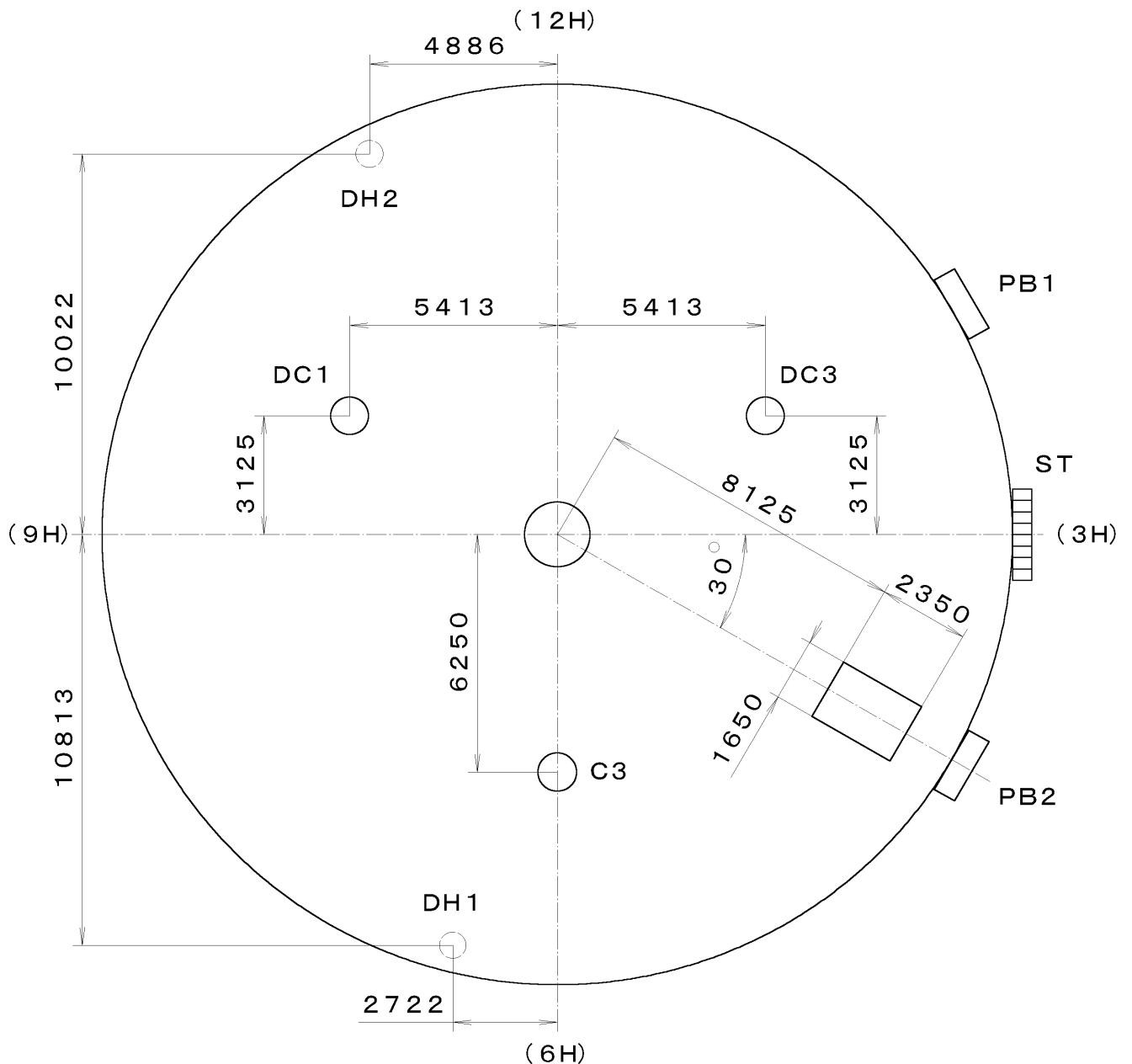


| | | | | | | | |
|---|-------------|-------|-------------|-----------|----------------|--------------|-----------|
| Material | Alterations | Date | Description | Appr. | Checked | Drawn | Name: |
| Heat Treatment | | | | | | | N. Suzuki |
| Hardness | | | | | | | |
| Plating | | | | | | | |
| Quantity | Unit | Scale | Parts No.: | Cal. No.: | Frame for Case | Drawing No.: | |
| 1 | 1/1000 mm | 8:1 | FS01 | FS01 | FS01C001 | | |
| <p>MIYOTA CITIZEN WATCH CO., LTD. TOKYO, JAPAN</p> | | | | | | | |



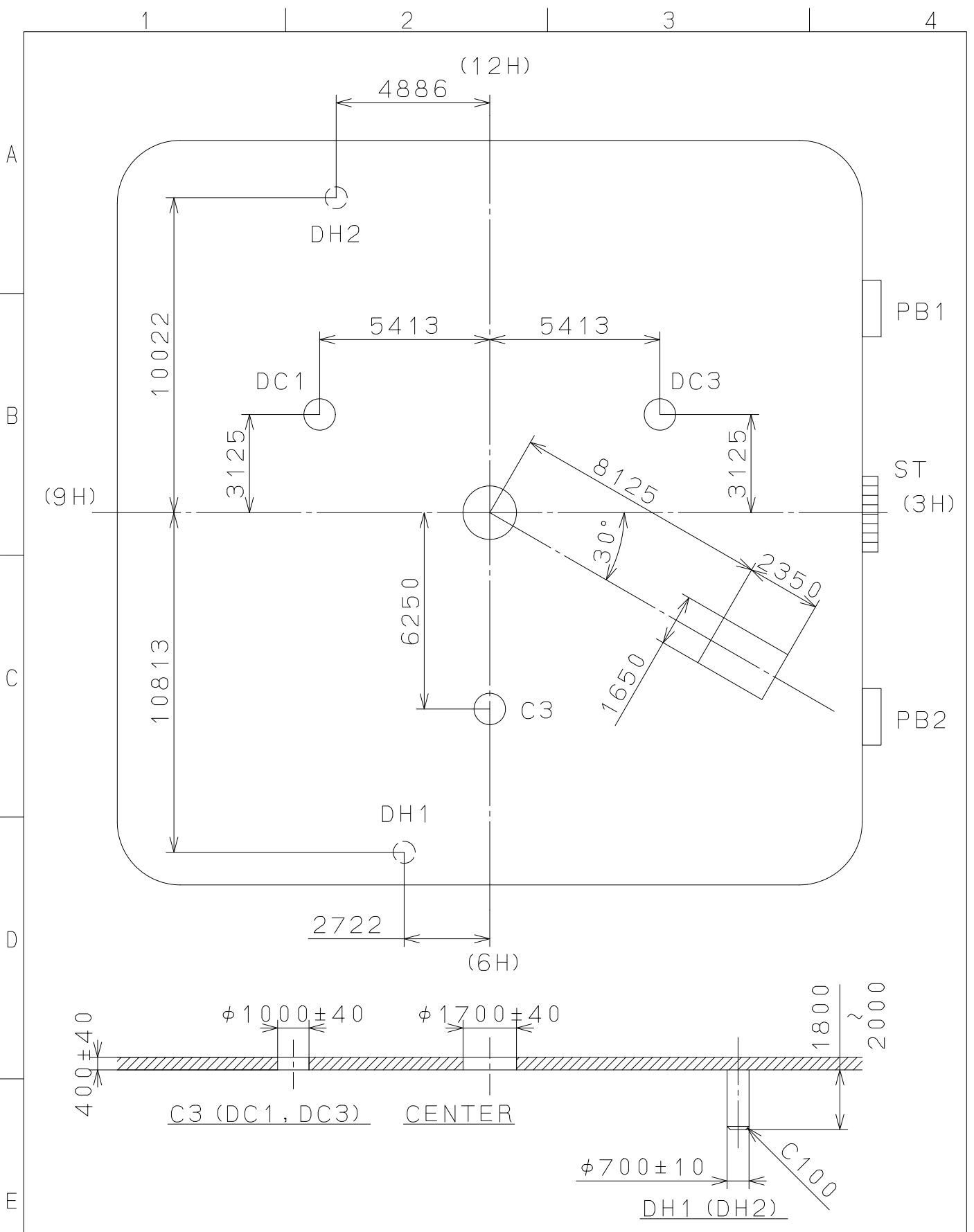
This drawing is provisional and subject to our reconfirmation and/or revision without notice.

*** T I P W *** FS00-00A (01) *** (2100 1121) 01-12-11 30.0



| | | | | | |
|----------------|--|--------------------|-----------|---------------|----------------------|
| 7 | | Quantity | | Cal. No. : | FS00-00A |
| 6 | | Unit | 1/1000 mm | Parts: | |
| 5 | | Scale | 6:1 | Name: | Indications for Dial |
| 4 | | Date | | Drawing No. : | |
| 3 | | Drawn | | MIYOTA | |
| 2 | | Checked | T. Hiruta | | |
| 1 | | Approved | | | |
| Material | | | | | |
| Heat Treatment | | General Tolerances | | | |
| Hardness | | Dimensions | | | |
| Plating | | Angles | | | |

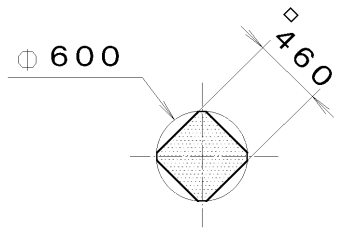
This drawing is provisional and subject to our reconfirmation and/or revision without notice.



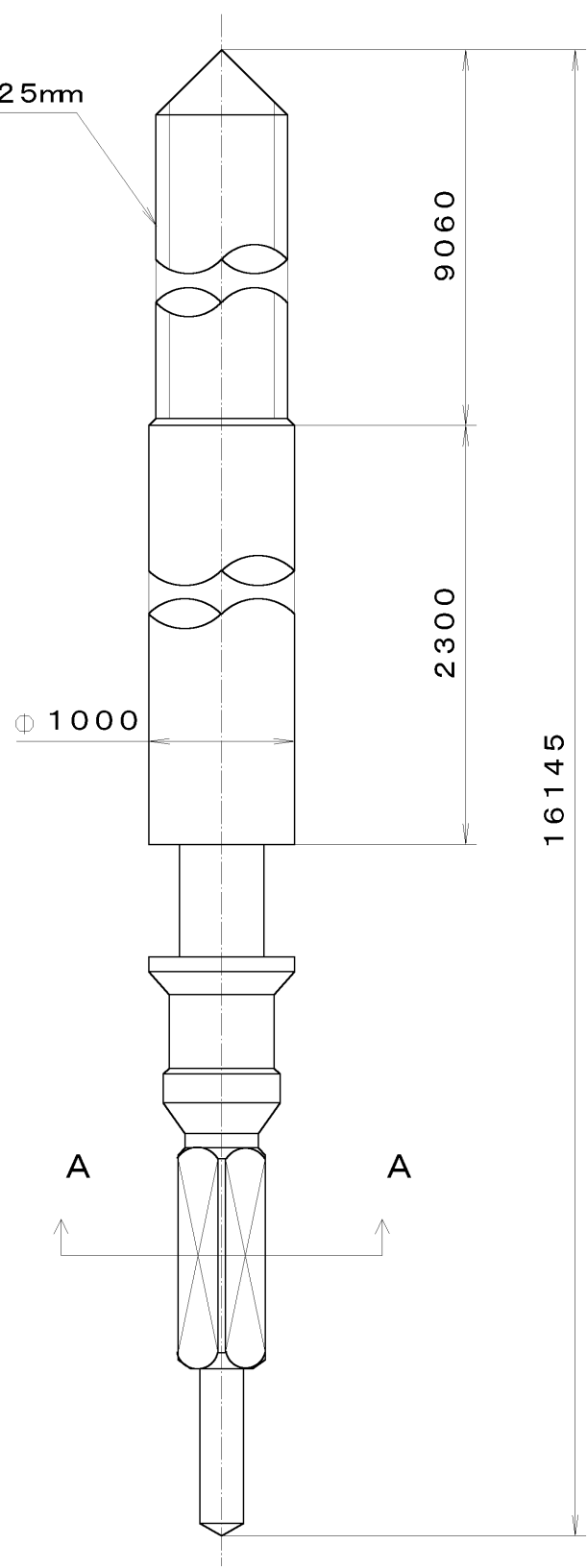
| | | | | | |
|----------------|------|-------------|--------------------|----------------------|--------------------------------------|
| △ | | | Quantity | | Cal.NO.: |
| △ | | | Unit | 1/1000 _{mm} | FS01-00A |
| △ | | | Scale | 6 : 1 | Parts No.: |
| △ | | | Date | | |
| △ | | | Drawn | | |
| Mark | Date | Description | Appro. | Checked | Name: |
| | | Alterations | Approved | T. Hiruta | Indications for Dial |
| Material | | | | | Drawing No.: FS01D000 |
| Heat Treatment | | | General Tolerances | | MIYOTA |
| Hardness | | | Dimensions | | |
| Plating | | | Angles | | |
| | | | | | CITIZEN WATCH CO., LTD. TOKYO, JAPAN |

This drawing is provisional and subject to our reconfirmation and/or revision without notice.

*** T I P W 065-549 (01) *** (2100 1121) 01-12-07



Section A-A



| | | | | |
|----------------|--|--------------------|-----------|------------------------|
| 7 | | Quantity | | Cal. No. : |
| 6 | | Unit | 1/1000 mm | Parts: |
| 5 | | Scale | 20:1 | |
| 4 | | Date | | 065-549 |
| 3 | | Drawn | | |
| 2 | | Checked | T. Hiruta | Name: |
| 1 | | Approved | | SETTING STEM |
| Material | | | | Drawing No. : 5490S000 |
| Heat Treatment | | General Tolerances | | MIYOTA |
| Hardness | | Dimensions | | |
| Plating | | Angles | | |



Cal. FS00/FS01/FS03 Instruction manual

CHRONOGRAPH FUNCTION: : CENTER SECOND HAND CHRONOGRAPH 1/1 sec.

Timing up to 59 minutes 59 seconds.

A) DISPLAYS AND BUTTONS

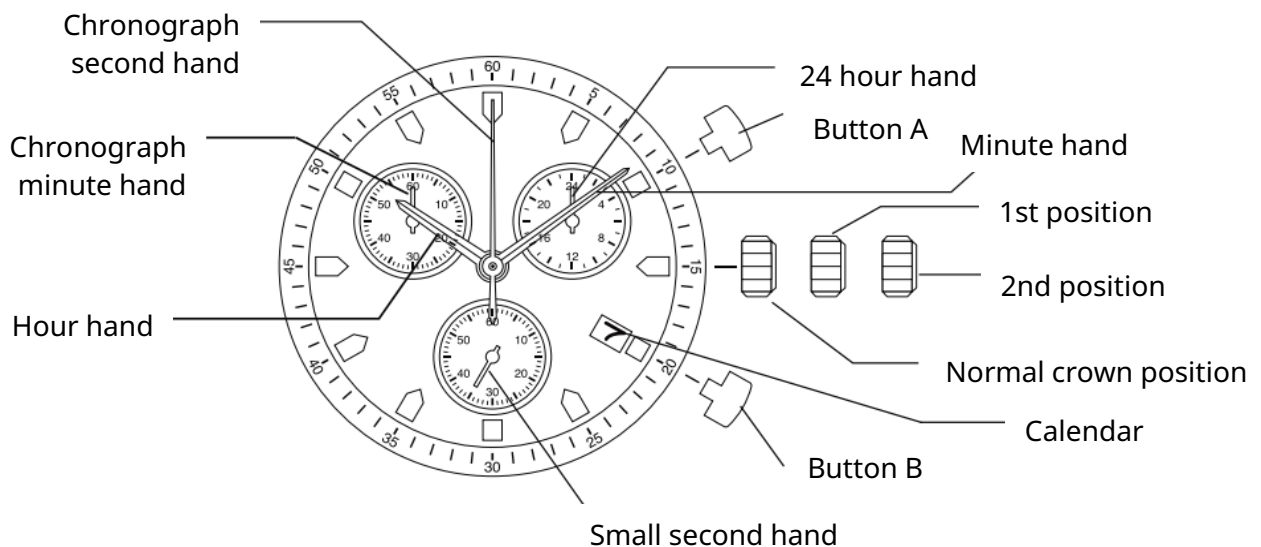
B) SETTING THE TIME

C) SETTING THE DATE

D) USING THE CHRONOGRAPH

E) CHRONOGRAPH RESET (INCL. AFTER REPLACING BATTERY)

A) DISPLAYS AND BUTTONS



B) SETTING THE TIME

1. Pull the crown out to the 2nd position.
2. Turn the crown to set hour and minute hands.
3. When the crown is pushed back to the normal position, small second hand begins to run.

C) SETTING THE DATE

1. Pull the crown out to the 1st position.
2. Turn the crown clockwise to set the date.

*If the date is set between the hours of around 9:00 PM and 1:00 AM, the date may not change on the following day.

3. After the date has been set, push the crown back to the normal position.

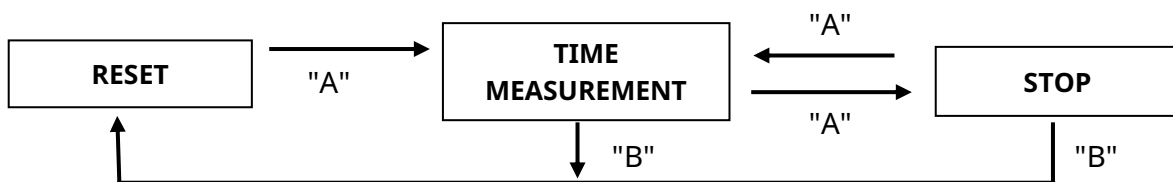
D) USING THE CHRONOGRAPH

This chronograph is able to measure and display time in 1/1 second united up to maximum of 59 minutes 59 seconds.

The chronograph second hand keeps continuously for 59 minutes 59 seconds after starting.

Measuring time with the chronograph

1. The chronograph can be started and stopped each time button "A" is pressed.
2. Pressing button "B" resets the chronograph and the chronograph second hand and chronograph minute hand return to zero position.



E) CHRONOGRAPH RESET (INCL. AFTER REPLACING BATTERY)

This procedure should be performed when the chronograph second hand does not return to zero position after the chronograph has been reset, and including after the battery has been replaced.

1. Pull the crown out to the 2nd position.
2. Press button "A" to set the chronograph second hand to the zero position.

The chronograph hand can be advanced rapidly by continuously pressing button "A".

3. Once the hand have been zeroed, return the crown to the normal position.

* Do not push crown to normal position while the chronograph second hand returns to zero position. It stops on the way when crown are returned to normal position and its position is recognized as zero position.

These specifications might be changed without prior notice.