

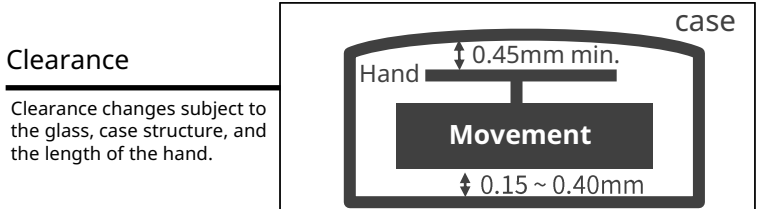


# 6S10 6S20 6S30 6S11 6S21

Size <ligne>	15'''
Height <mm>	4.90
Accuracy <per Month>	±20 sec
Battery Life	4 years (6S21 3 years)

**Battery consumption could be minimum by pulling out the stem**

Balance Weight <μN · m>	Minute 1.00 Second 0.40 Small 0.04
----------------------------	--

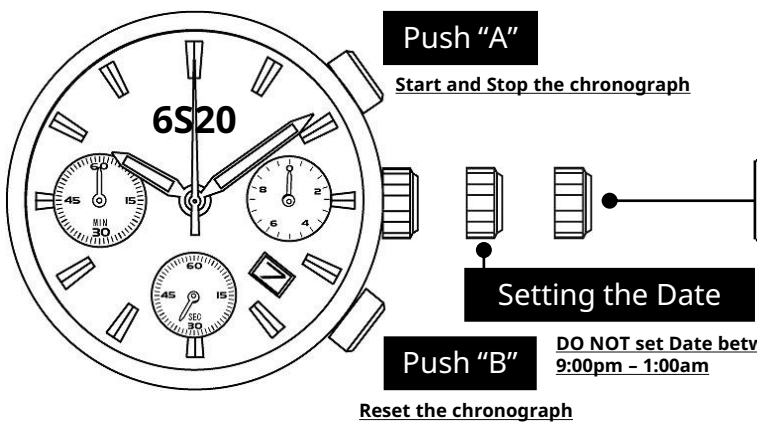
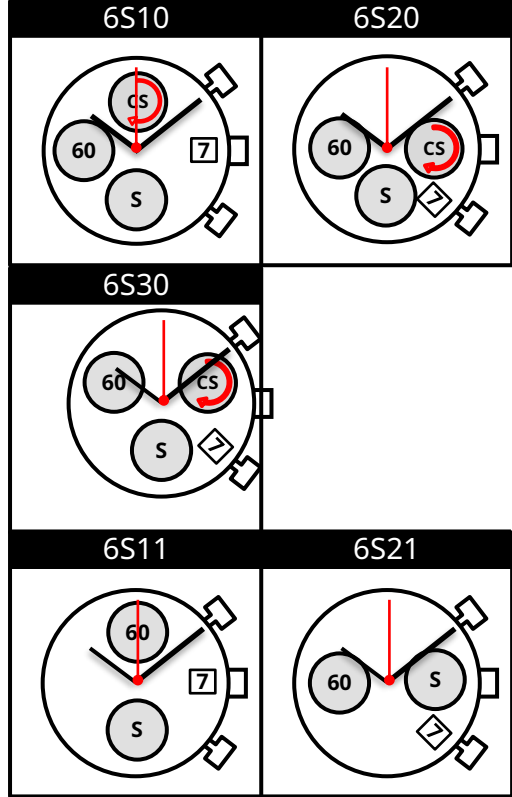
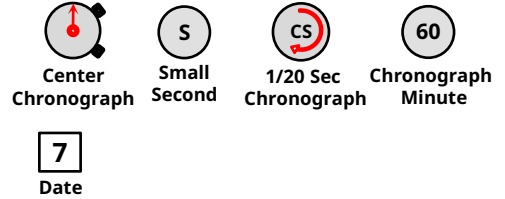
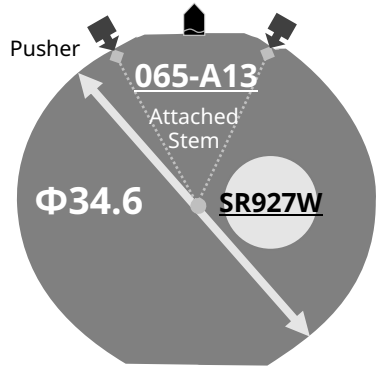


Original Package	200 pcs
------------------	---------

Time measurement

Accuracy

The unit (gate) time of measurement must be set at "10 sec." and the measurement must be performed in the form of complete watch.



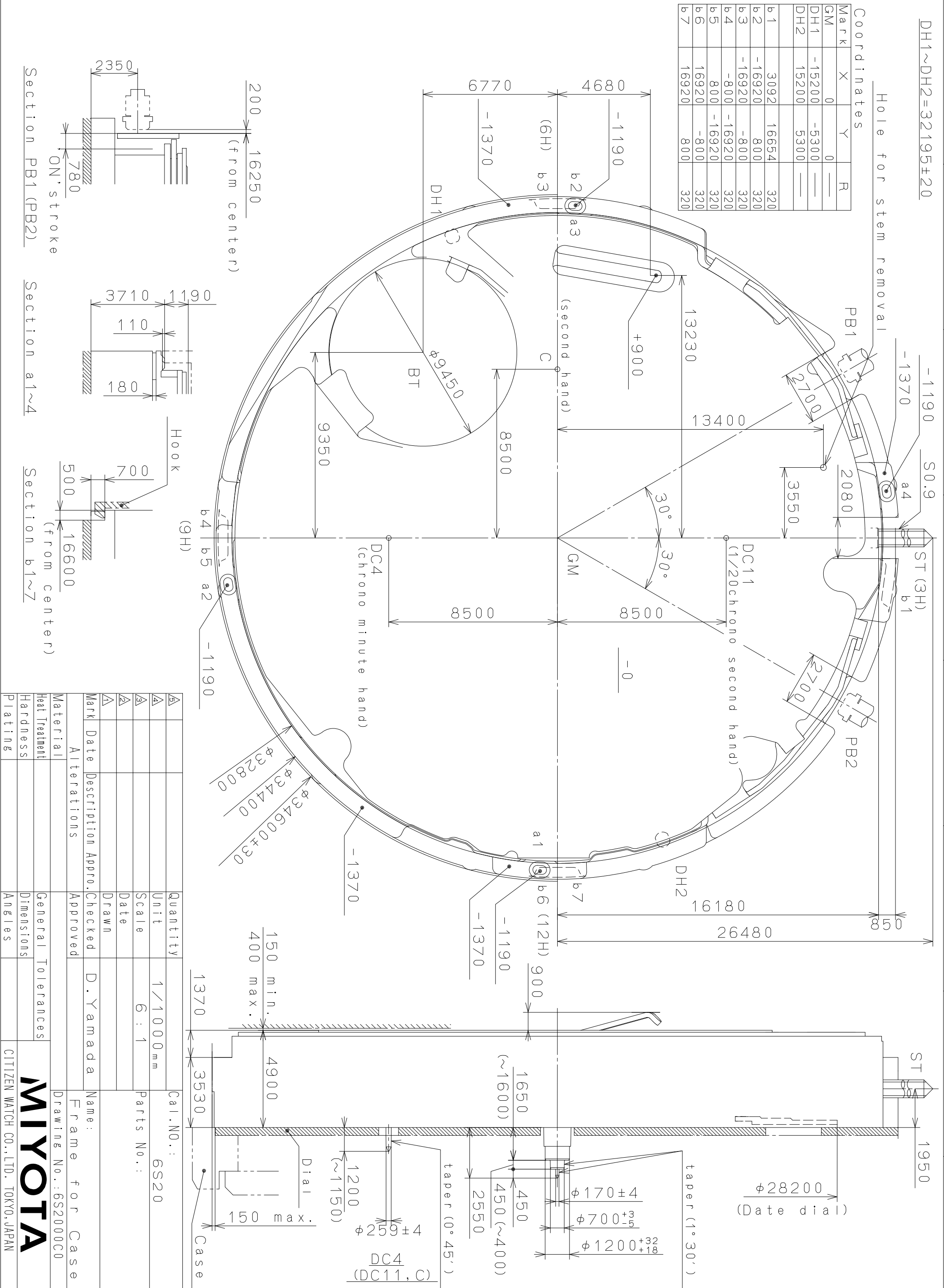
**Setting the Time**

**Set CHRONOGRAPH hands to reset**

**Push A or B to set the hands to the zero position. The chronograph hands can be advanced rapidly by continuously pressing button. A for the Center Chronograph Second hand, B for 1/20 hands**

This drawing is provisional and subject to our reconfirmation and/or revision without notice.

Coordinates		
Mark	X	Y
GM	0	0
DH1	-15200	-5300
DH2	15200	5300
b1	3092	16654
b2	-16920	800
b3	-16920	-800
b4	-800	-16920
b5	800	-16920
b6	16920	-800
b7	16920	800



Mark	Date	Description	Appr.	Checked	Drawn	Name:
Alterations			Approved			D. Yamada
Material						Frame for Case
Heat Treatment						Drawing No.: 6S2000C0
Hardness						
Plating						

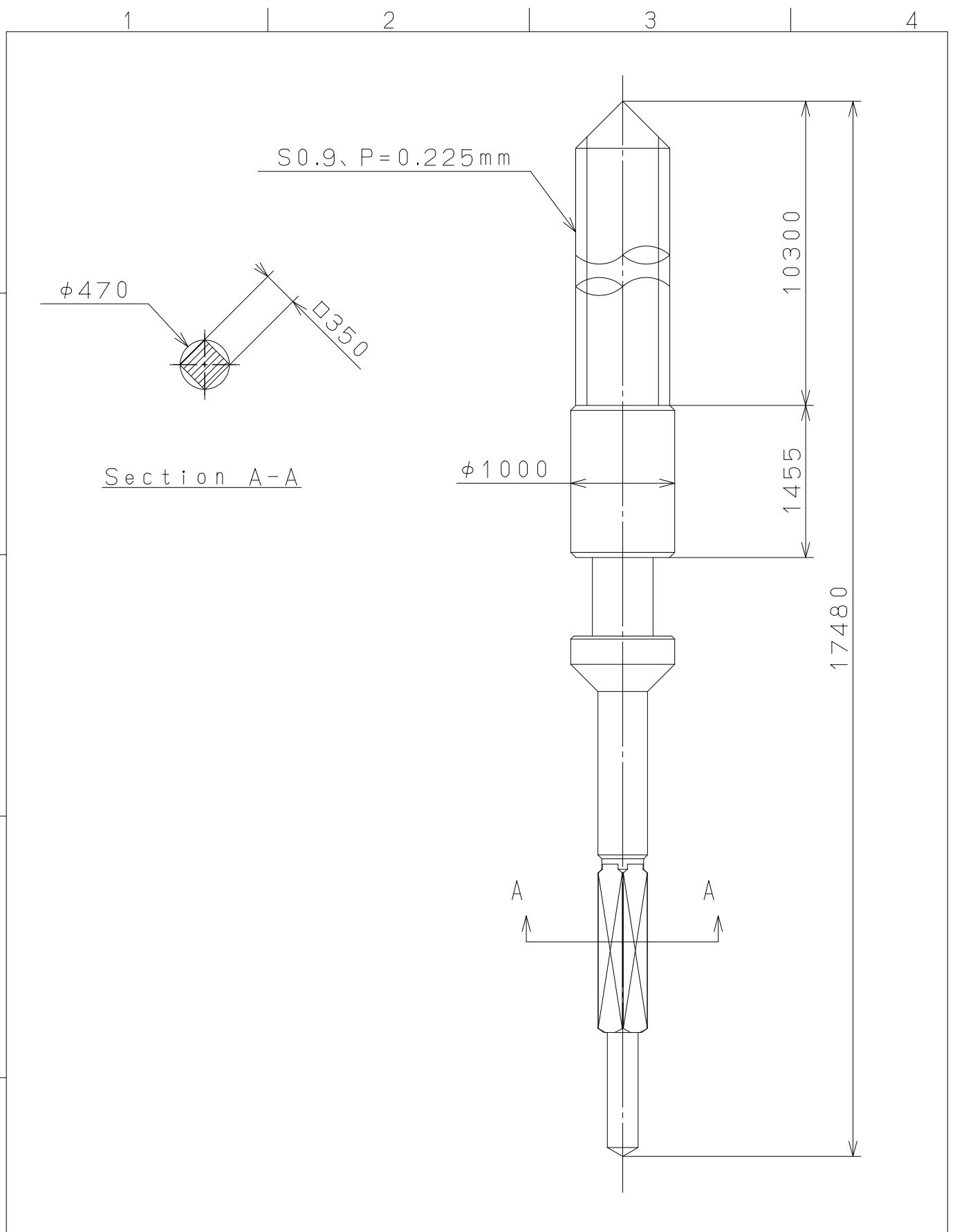
  

Quantity	Unit	Cal. NO.:
1	1/1000 mm	6S20
Scale	6 : 1	Parts No.:
Date		
Drawn		
Checked		
Appr.		

**MIYOTA**  
CITIZEN WATCH CO., LTD. TOKYO, JAPAN



This drawing is provisional and subject to our reconfirmation and/or revision without notice.



△5			Quantity		Cal.NO.:
△4			Unit	1 / 1000 mm	
△3			Scale	20 : 1	Parts No.:
△2			Date		065-A13
△1			Drawn		
Mark	Date	Description	Appro.	Checked	D. Yamada
Alterations			Approved	Name: SETTING STEM	
Material					Drawing No.: A13000S0
Heat Treatment					<b>MIYOTA</b> CITIZEN WATCH CO., LTD. TOKYO, JAPAN
Hardness	General Tolerances				
Plating	Dimensions				
	Angles				



## Cal. 6S10/6S20/6S30 Instruction manual

**CHRONOGRAPH FUNCTION: CENTER CHRONOGRAPH SECOND HAND 1/4 sec.**

**Timing up to 59 minutes 59 seconds at 1/20 sec.**

### A) DISPLAYS AND BUTTONS

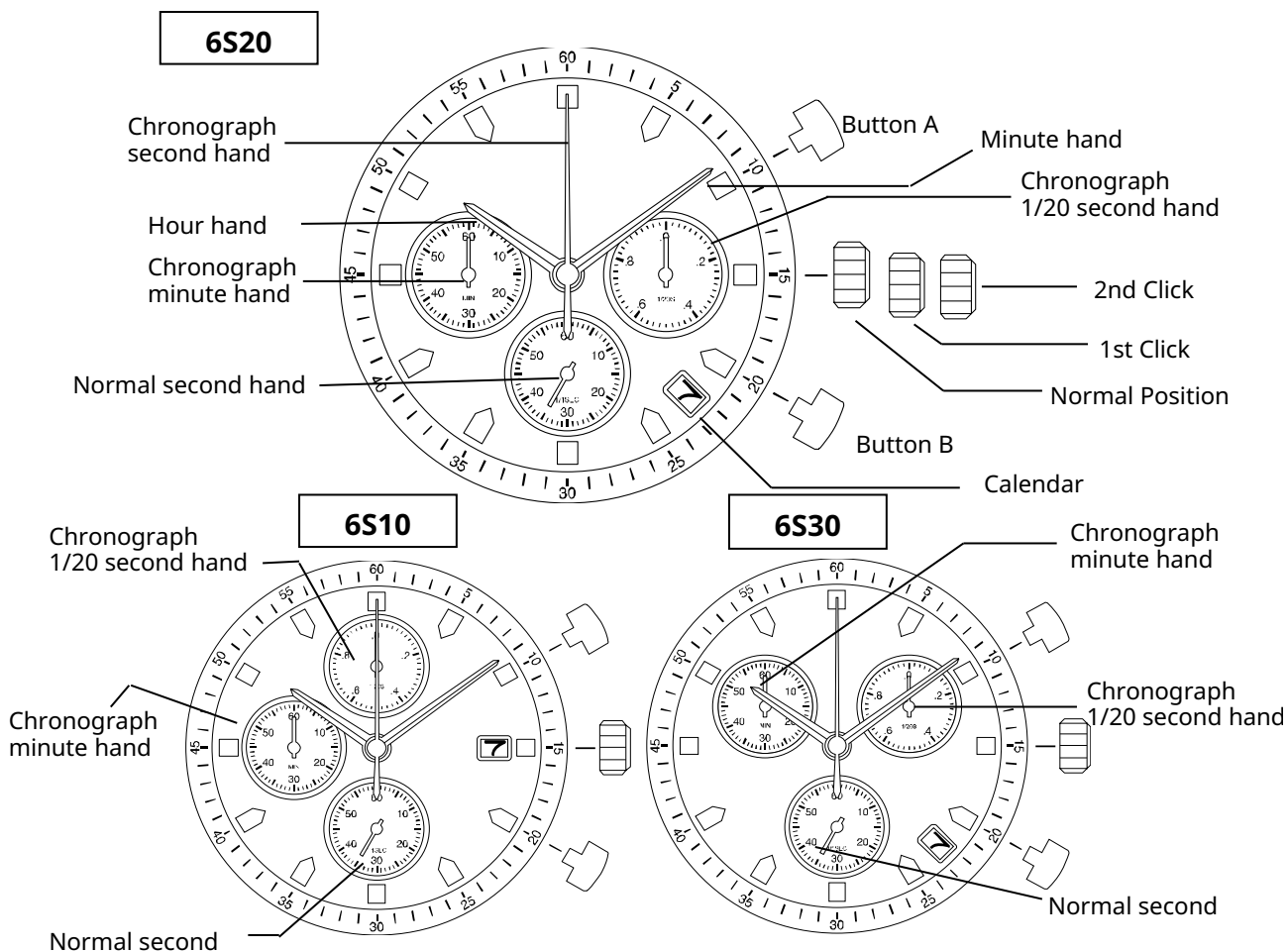
#### B) SETTING THE TIME

#### C) SETTING THE DATE

#### D) USING THE CHRONOGRAPH

#### E) CHRONOGRAPH RESET (INC. AFTER REPLACING BATTERY)

### A) DISPLAYS AND BUTTONS



## B) SETTING THE TIME

1. Pull the crown out to the 2nd Click Position.
2. Turn the crown clockwise to set hour and minute hands.
3. After the time has been set, push the crown back to the Normal position.

## C) SETTING THE DATE

1. Pull the crown out to the 1st Click Position.
2. Turn the crown clockwise to set the date.
  - \* If the date is set between the hours of around 9:00 PM and 1:00 AM, the date may not change on the following day.
3. After the date has been set, push the crown back to the Normal position.

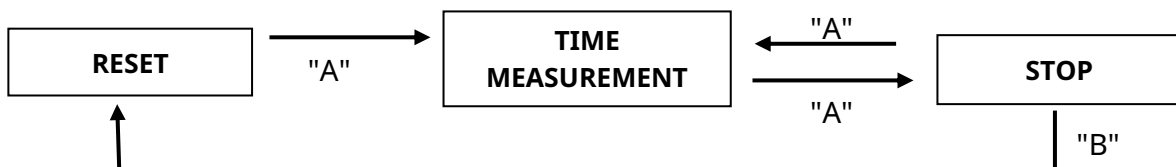
## D) USING THE CHRONOGRAPH

This chronograph is able to measure and display time in 1/20 second united up to maximum of 59sec.

The chronograph 1/20 second hand keeps continuously for 30 seconds after starting, and then stops at Zero position.

### 【Measuring time with the stopwatch】

1. Press button " A " to start the chronograph.
2. The chronograph can be started and stopped each time button "A" is pressed.
3. Press button "B" to reset the chronograph and chronograph minute and second hands return to their Zero positions.



## **E) CHRONOGRAPH RESET (INCL. AFTER REPLACING BATTERY)**

This procedure should be performed when the chronograph second hand does not return to the Zero position.

1. Pull the crown out to the 2nd Click Position.
2. Press the button "A" once to set the chronograph second hand to the Zero position.
3. Press the button "B" once to set the chronograph 1/20 second hand to the Zero position.

\*The chronograph hands can be advanced rapidly by continuously pressing button "A" or "B".

4. Once the hands are set at Zero position, reset the time and return the crown to its normal position.

***These specifications might be changed without prior notice.***